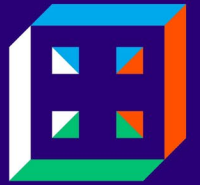


AEGIR



Incremental
Renovation
Package

AEGIR project Workshop Digital Innovations

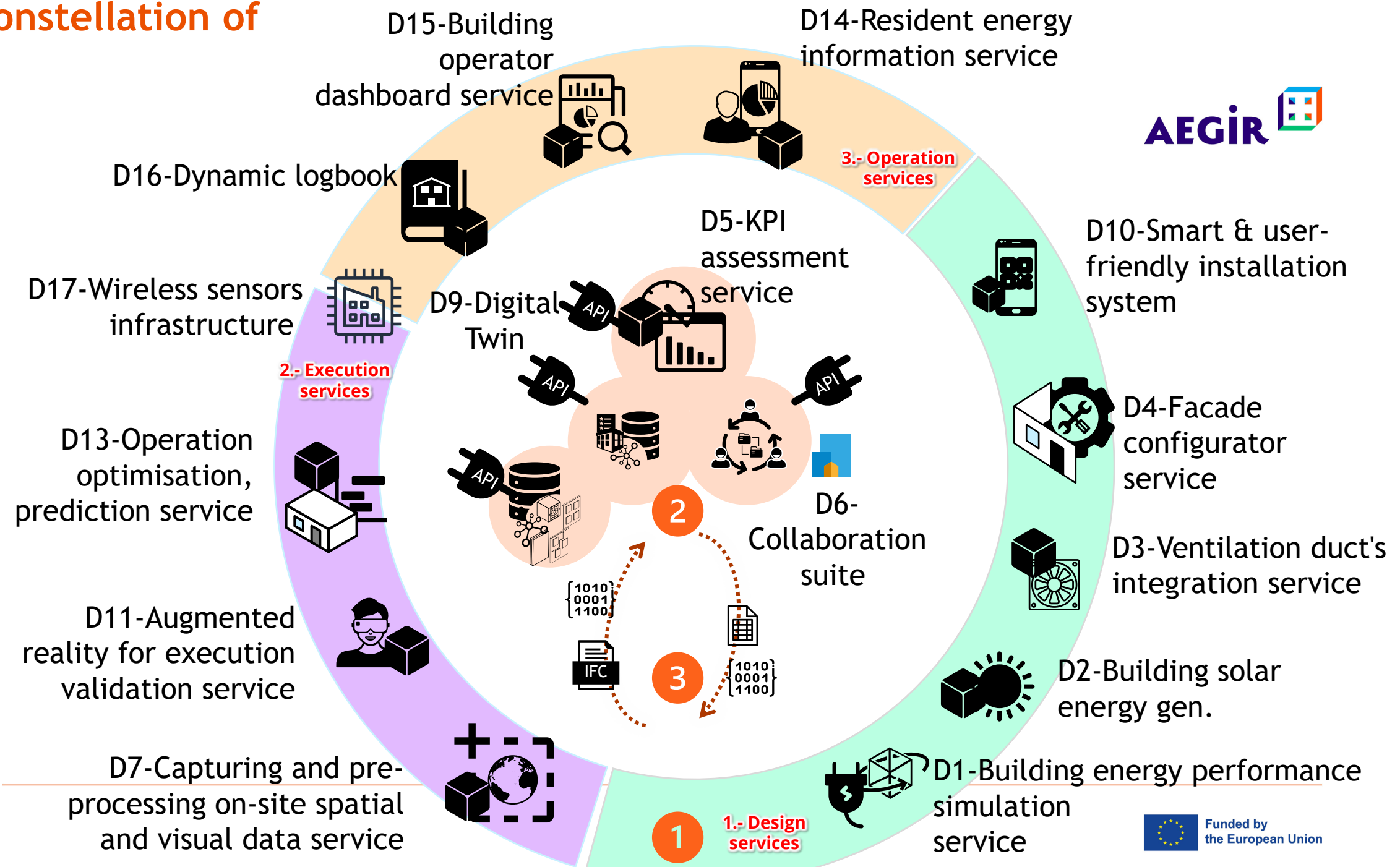
Shaping sustainable futures event
06.03.2025, Brussels



Funded by
the European Union

aegirproject.eu

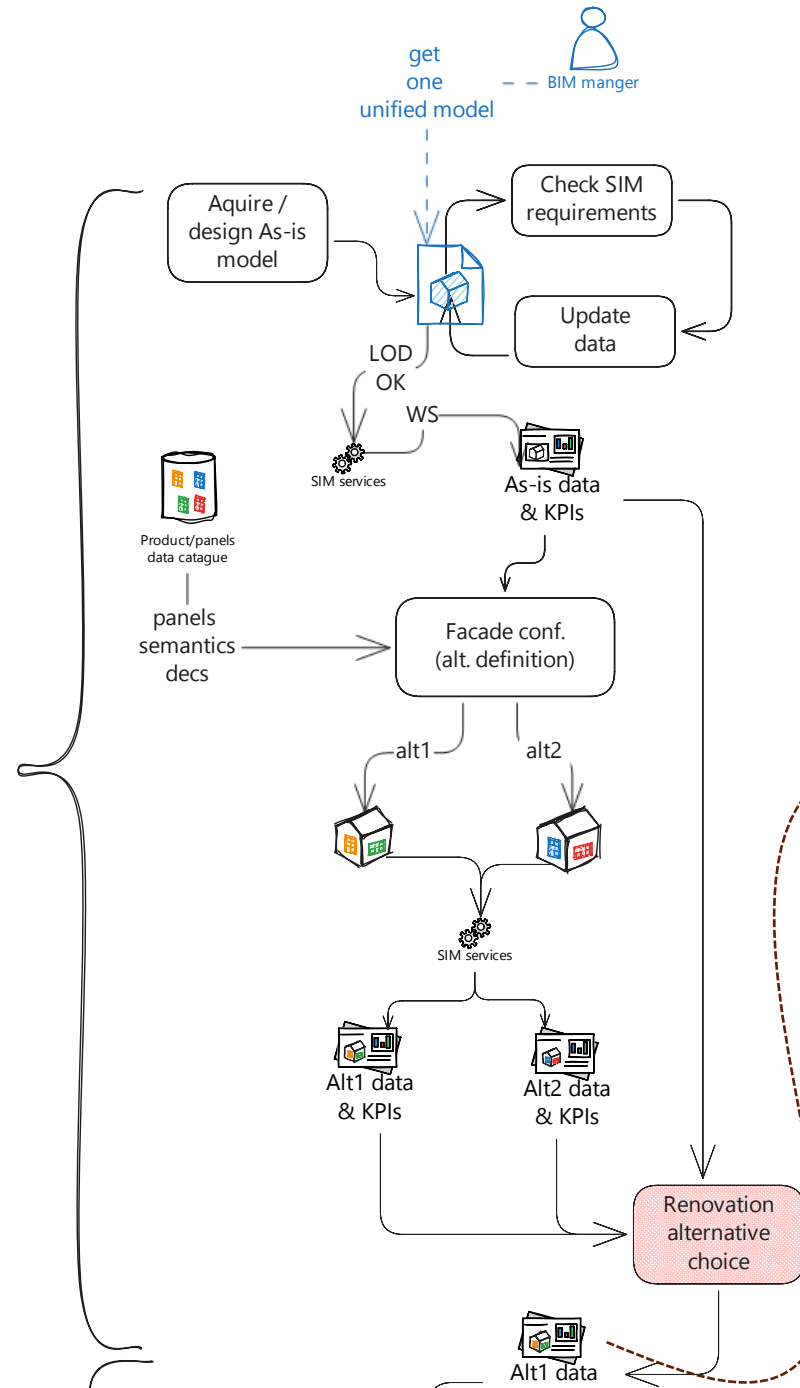
AEGIR constellation of services



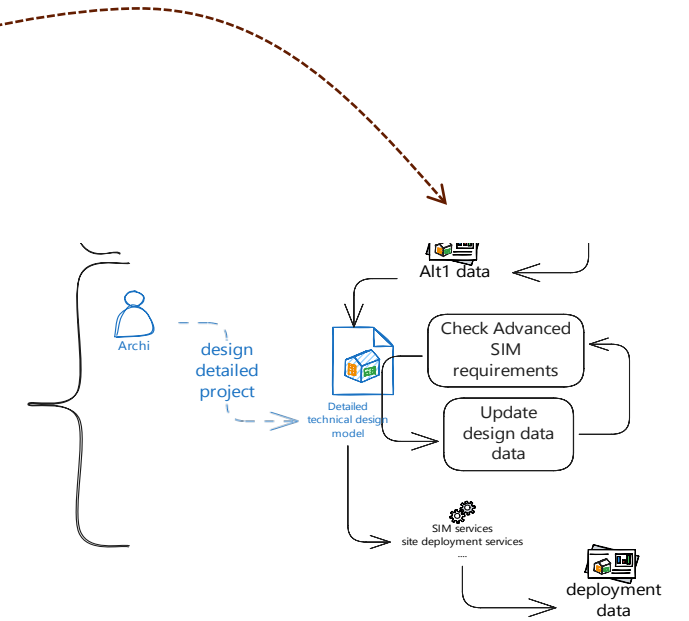
AEGR technical process



* Strategic Concept design phase



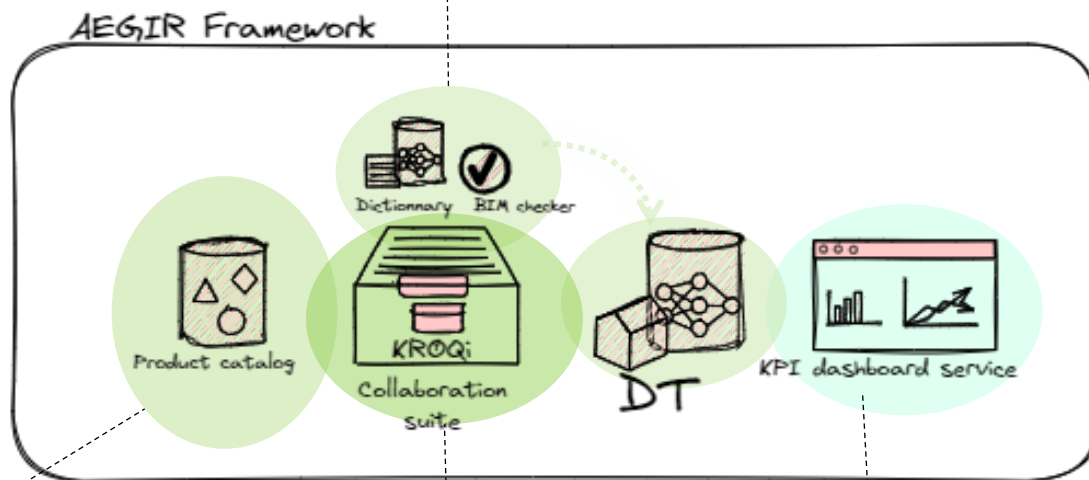
* Technical design phase



Integration core Framework detailed



Check IFC quality so model can be used by AEGIR tools + correct missing properties (helper)

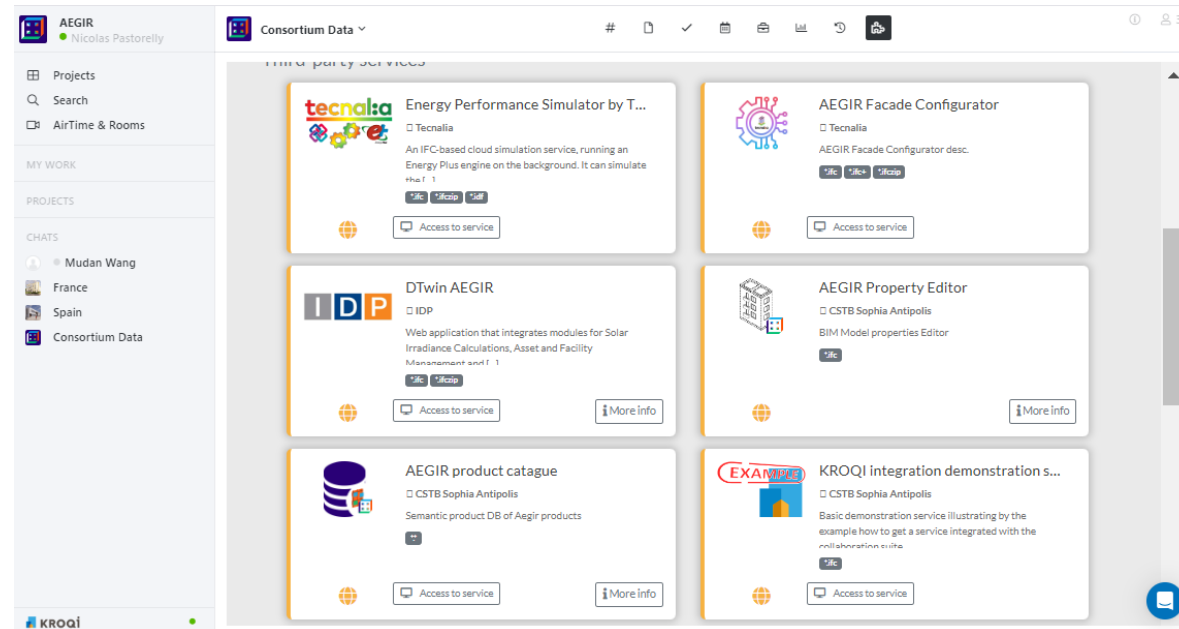


Define panels' properties to be used by AEGIR tools

Exchange documents, manage accesses etc.



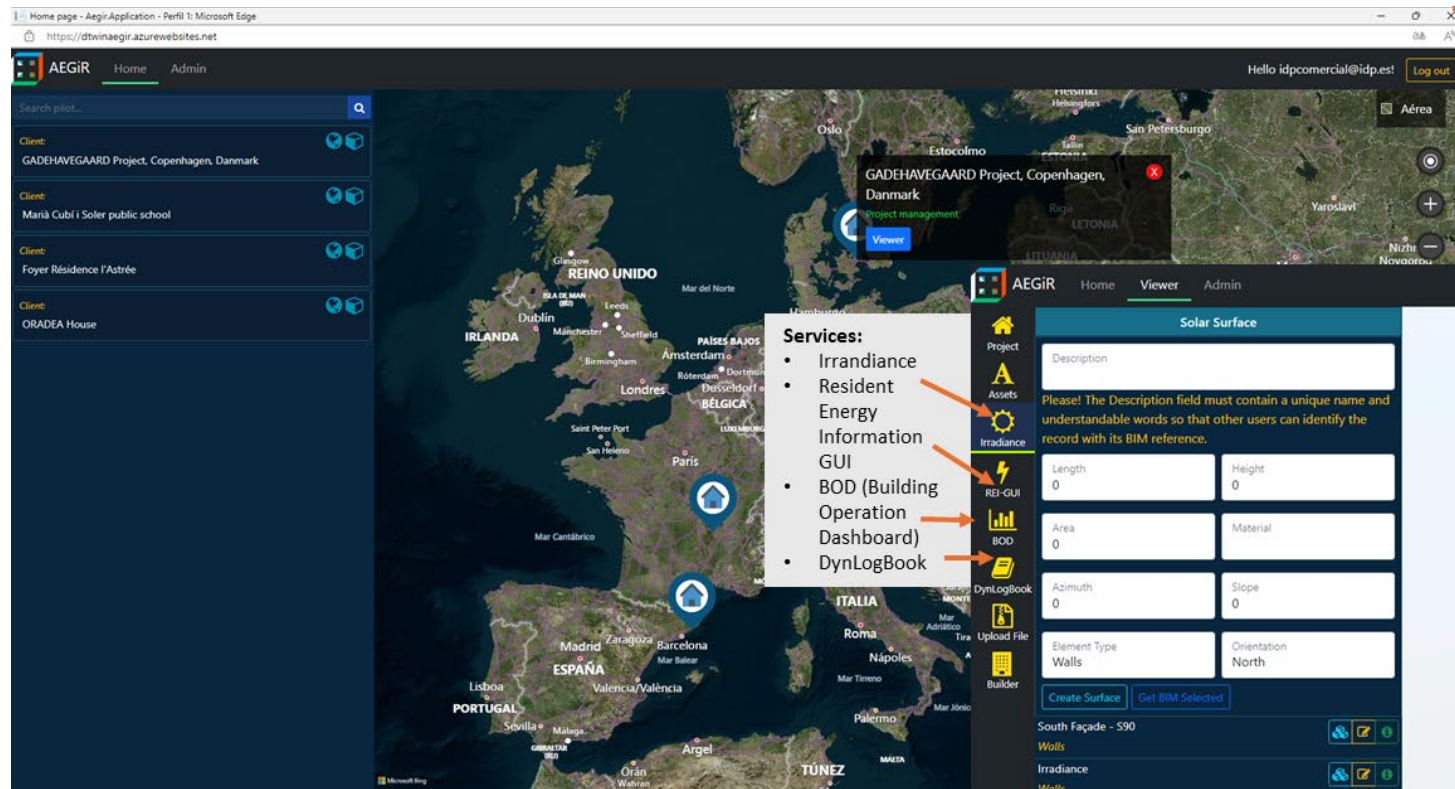
Choose renovation alternatives



Examples: Direct access page to the demo-sites with the case of Denmark building and the digital services (tools) list managed within this environment

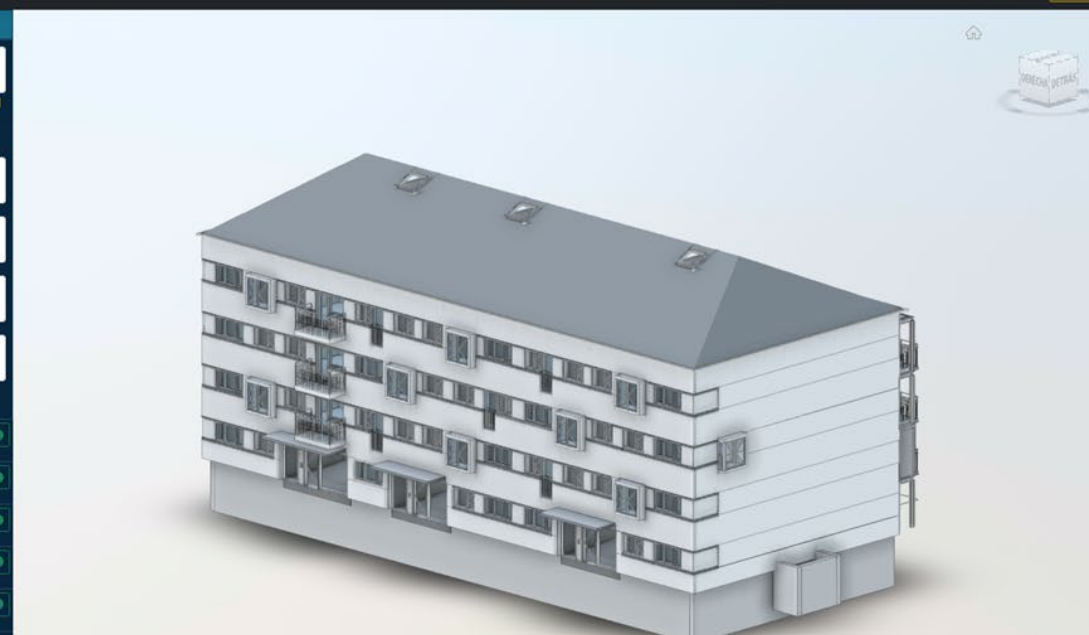
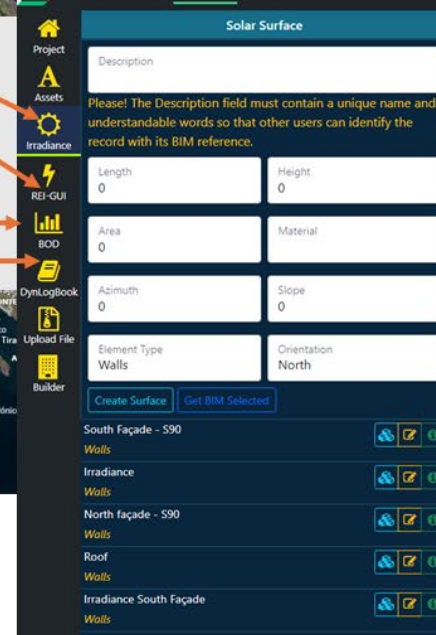


AEGiR Launching page



Authentication login/logout

Digital Twin Environment



Examples: Access through Kroqi platform with the view of the Romanian demo

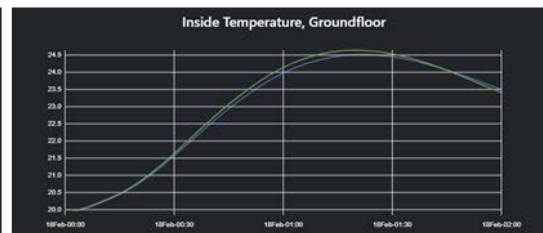
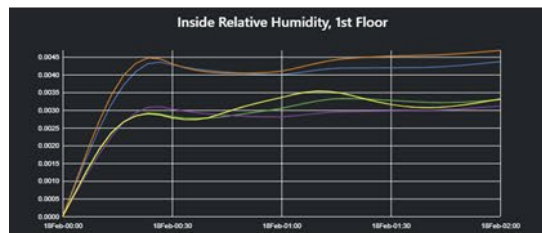


The image shows a multi-layered screenshot of the AEGiR platform. The background is a service catalog page with a sidebar on the left and a main content area titled 'Services tiers'. Three service cards are visible: 'tecnalia Energy Performance', 'IDP DTwin AEGiR', and 'AEGiR KPI service'. The 'IDP DTwin AEGiR' card is highlighted with an orange arrow pointing to a login window. The login window is titled 'Log in - Aegir.Application - Google Chrome' and shows a 'Log in' form with fields for 'Email' and 'Password', a 'Remember me?' checkbox, and a blue 'Iniciar sesi3n' button. Below the login window is a dark blue dashboard titled 'AEGiR' with a navigation menu on the left. The menu includes 'Project', 'Assets', 'Inventory', 'Hierarchy', 'Classification', 'Irradiance', 'REI-GUI', 'BOD', 'DynLogbook', 'Upload File', and 'Builder'. The 'Inventory' menu item is highlighted with an orange arrow. The main content area of the dashboard shows 'Inventories' with a message 'There're no inventories created.' and a search filter. An orange arrow points from the 'REI-GUI' menu item to a 3D architectural rendering of a building.

Resident energy information service - GUI

Building operator dashboard

Examples: The Malgrat (Spanish) demo showing the services based on air quality monitoring



Thank you!

Julen.astudillo@tecnalia.com

AEGIR



Incremental
Renovation
Package



Follow aegir
on LinkedIn



Funded by
the European Union

Shaping sustainable futures event - 06.03.2025, Brussels

aegirproject.eu